

**mObridge Application Note**  
**AUDI CODING**  
**Audi A8 U.S.**



For Telephone Coding and Gateway Coding for mObridge products, refer the Table of Contents sections below.

The items shown in **bold red** are the units that are of interest/importance to mObridge ABT2010 installation.

This Car's Basic Options (as a case example)..... 2

Ross-Tech VAG-COM VCDS and CODING WARNING..... 2

Entry Screen – Select Control Module..... 2

**MMI Software Version for Telephone Operation..... 3**

Select Control– Installed Modules ..... 3

**19: CAN Gateway (IMPORTANT)! ..... 5**

    Advanced ID - Versions..... 5

    Installation List ..... 6

    Coding..... 7

**77: Telephone..... 8**

    Advanced ID - Versions..... 8

**77: Telephone - Coding..... 9**

## This Car's Basic Options (as a case example)

### Basic options:

Bluetooth	= YES
Bang & Olufsen	= YES
Telematics	= NO (Audi stopped offering OnStar in U.S. cars after 2005)
Audi Music Interface (AMI)	= YES
6CD Changer (CDC)	= YES
Rear Entertainment	= NO
Backup Cam	= YES
TV Tuner	= NO (not offered as U.S. option)
Navigation	= YES (all A8/S8 should have Navi and MMI-High MOST)

## Ross-Tech VAG-COM VCDS and CODING WARNING

VAG-COM / VCDS is one particular 3<sup>rd</sup> party tool that can access the Audi-VW diagnostics and do the coding, as long as you know somewhat what you are doing. **DO NOT CODE A MODULE WITHOUT KNOWING WHAT YOU ARE CODING AS YOU CAN MAKE THE MODULE INOPERABLE.**

### Entry Screen – Select Control Module

To read or code individual control modules, e.g., Telephone, you want this.

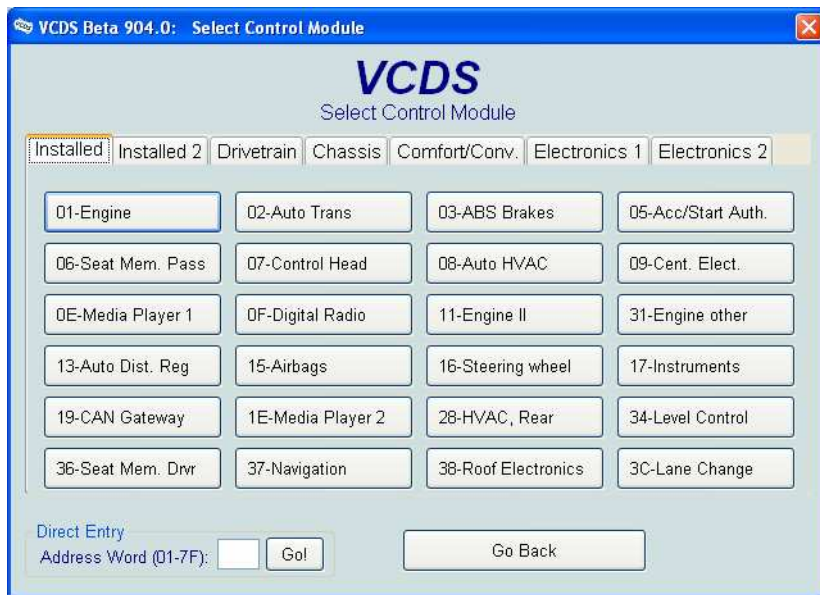
## MMI Software Version for Telephone Operation

It is important to note that for correct Bluetooth operation of the mObridge Bluetooth kit that the MMI software needs to be above a particular software level. Early A8 and A6 vehicles that have never had a software update from the dealer will find that their Bluetooth does not operate correctly. It is highly recommended having at least software in the US variant vehicles above the 2740 as a minimum. US vehicles are highly recommended to have 3360 or 4140. Rest of World vehicles are recommended to have 5150 or 5170 software as the latest software installed.

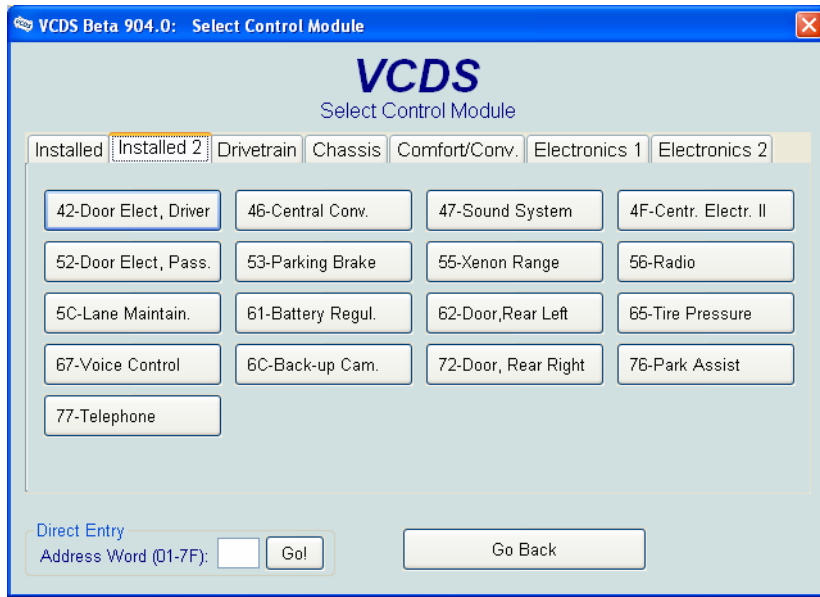
Software upgrades can be easily done by the dealer with an update CD through the CD changer.

## Select Control– Installed Modules

Shows the modules that are available according to options/features in this particular model/car.



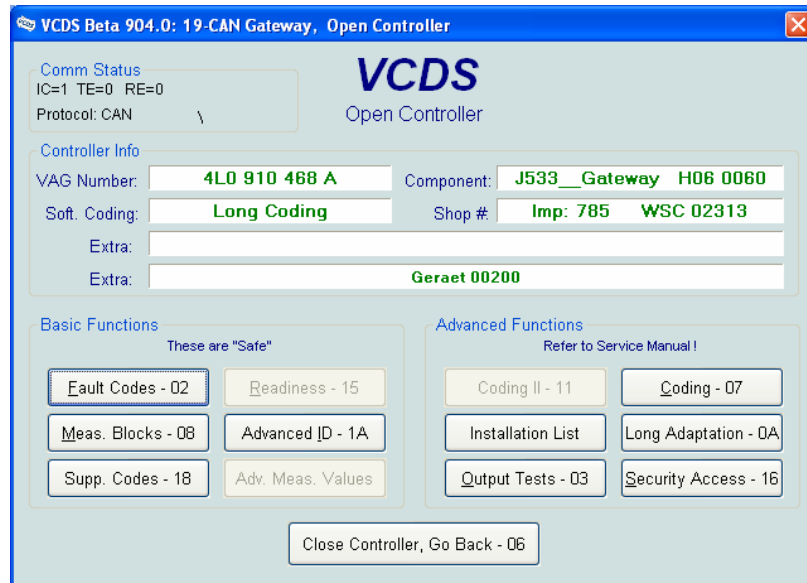
**TAB 1:**



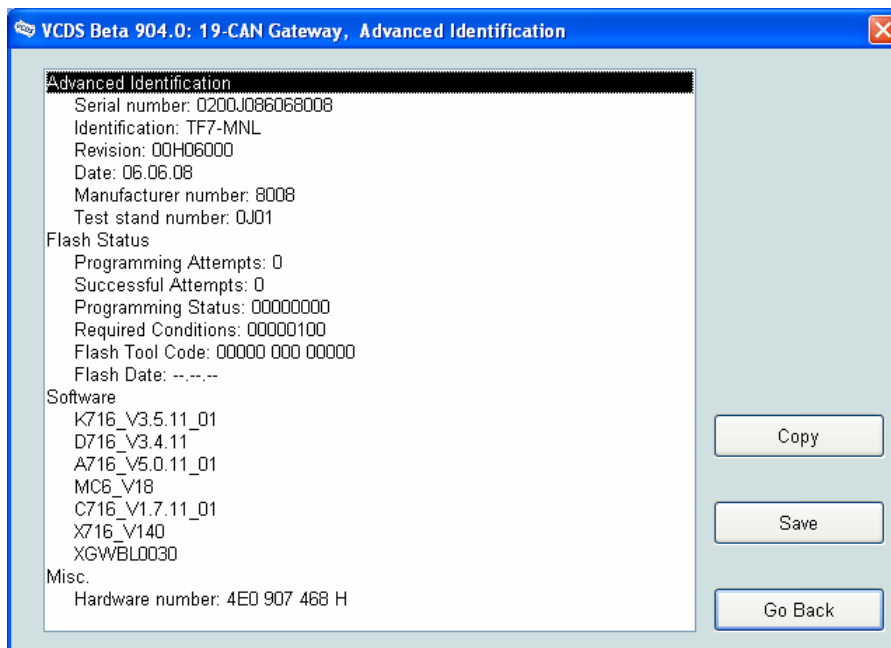
TAB 2:

## 19: CAN Gateway (IMPORTANT)!

CAN Gateway coding is also VERY important to features Bluetooth / Telephone Coding. If they're not coded correctly in the CAN Gateway then very likely the CAN gateway isn't going to pass important information to and from MOST such as MMI controller, instrument cluster display (KOMBI) and Steering Wheel.



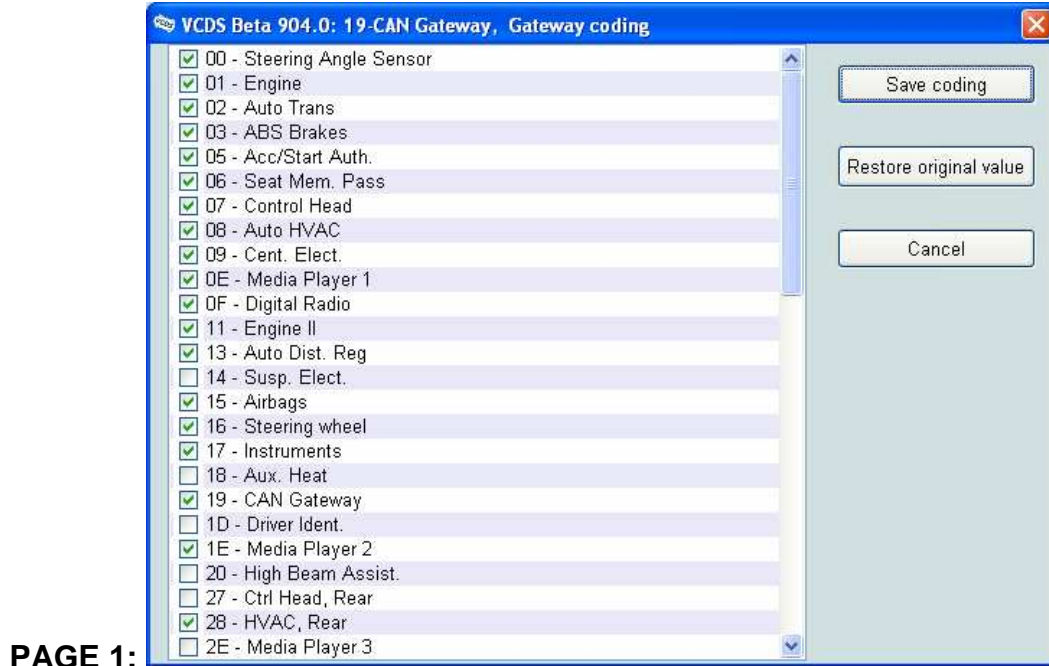
### Advanced ID - Versions



## Installation List

Features Installed / Coded in the CAN Gateway.

See also later in document reading out Gateway Installations List as another way to check this.



**PAGE 1:**

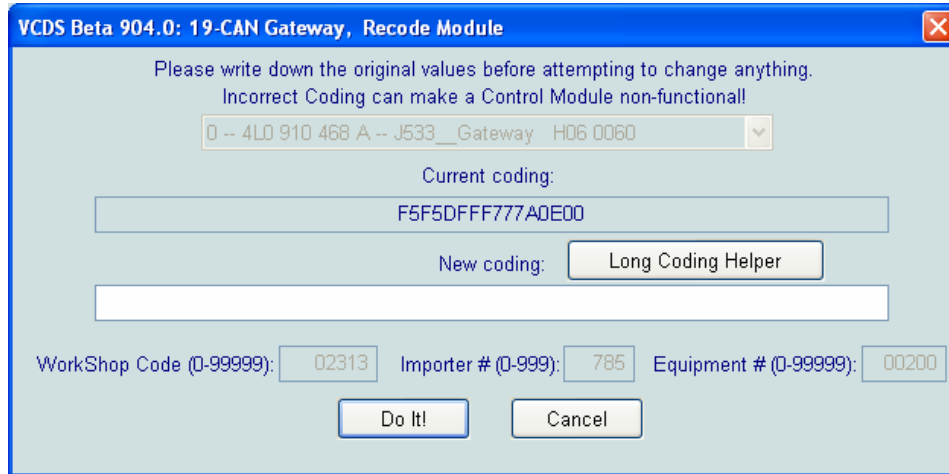
Notice Telematics not installed, Telephone installed.



**PAGE 2:**

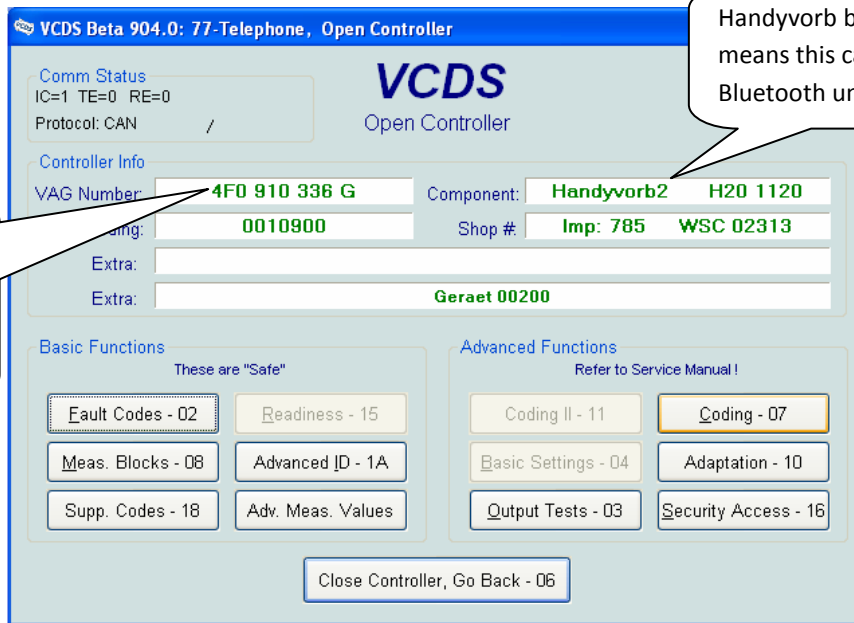
## Coding

There isn't anything significant to do or read in the coding of the gateway.  
This should be handled in the Installations List for the gateway. See also later in document about reading Gateway Installations List as another way to check this.



## 77: Telephone

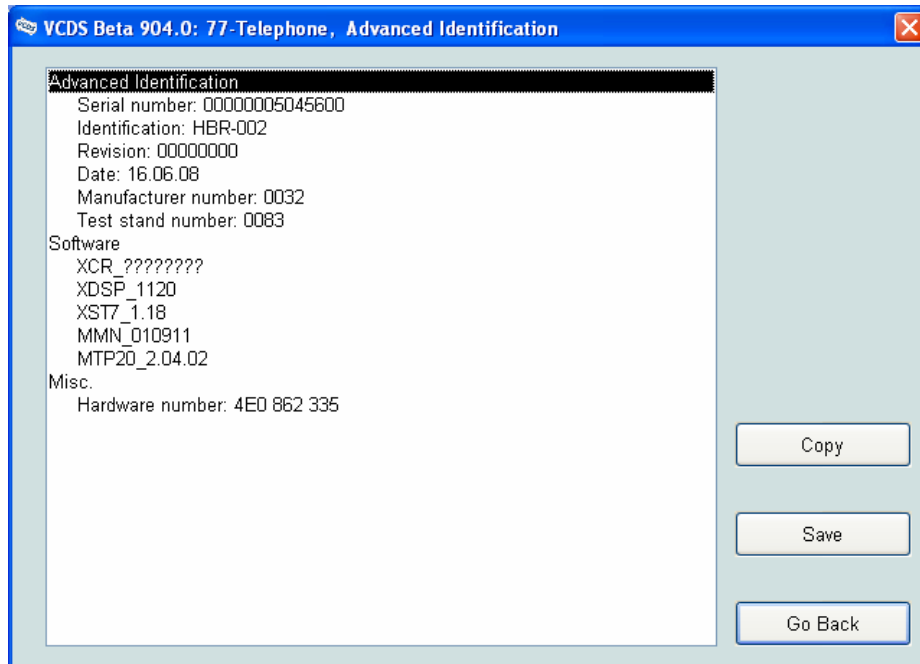
This is for Bluetooth after approximately 2005.



A web search on this part # can often tell you more exactly what the module is (e.g., specific generation of part, etc)

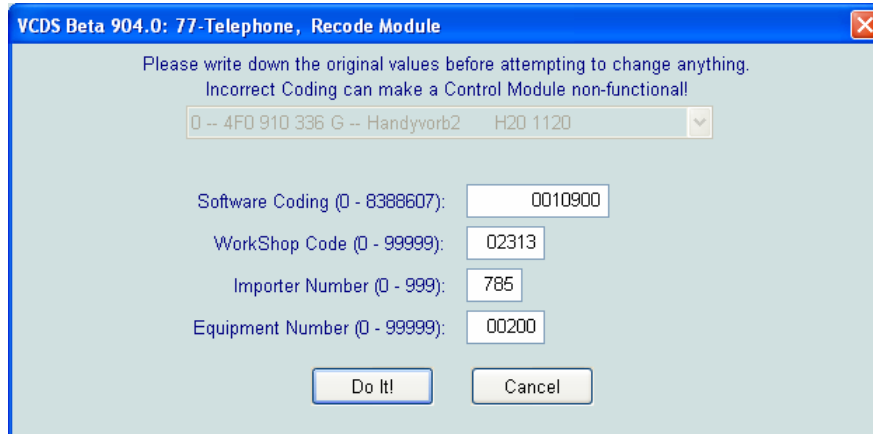
Handyvorb basically means this car has a Bluetooth unit.

## Advanced ID - Versions

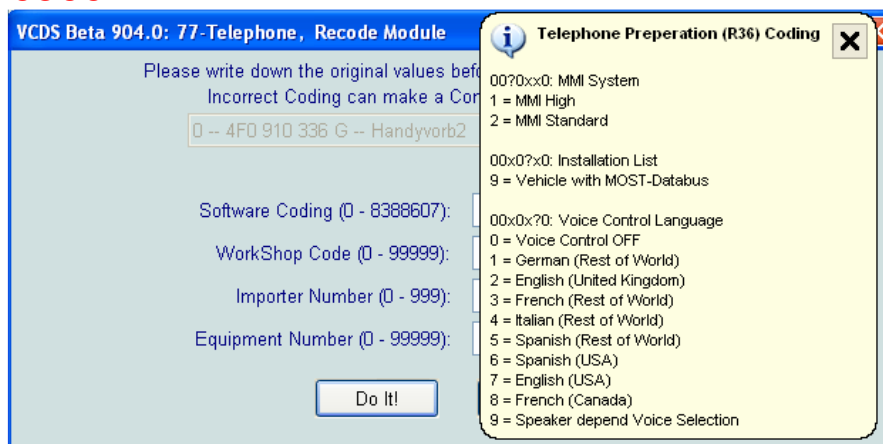




## 77: Telephone - Coding



## Coding 0010900



**0010900 means:**

- **MMI High**
- **Vehicle with MOST bus**
- **Voice Control Off (don't believe this is correct, but in any case try to leave the language alone if at all possible unless you are clear what the coding means)**