



K2 A2B Ford Amplifier F150 Regular B&O Install Guide.

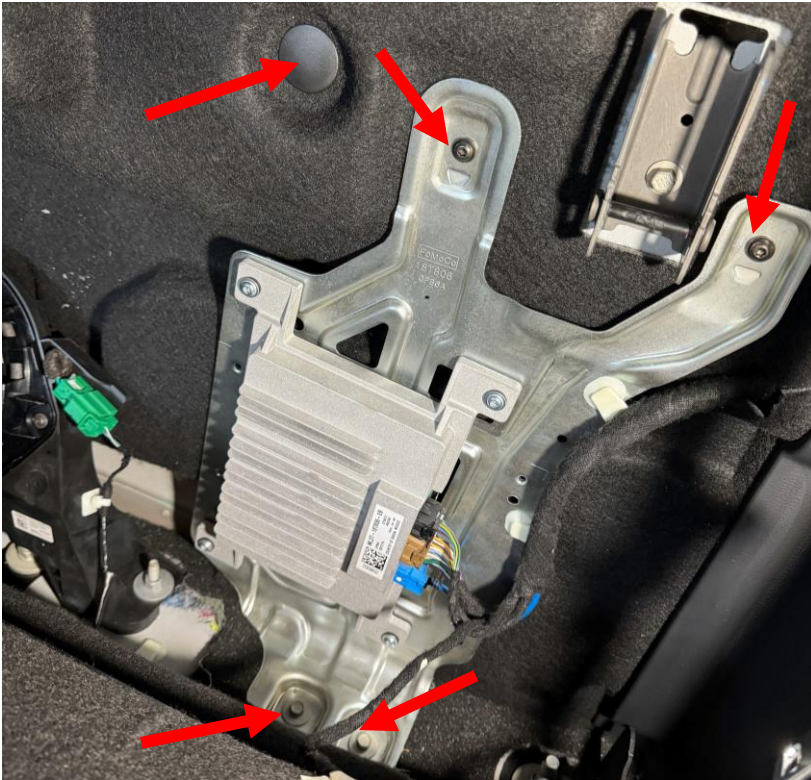
DRAFT

Step 1:

Fold the rear seats down to gain access to the amplifier.

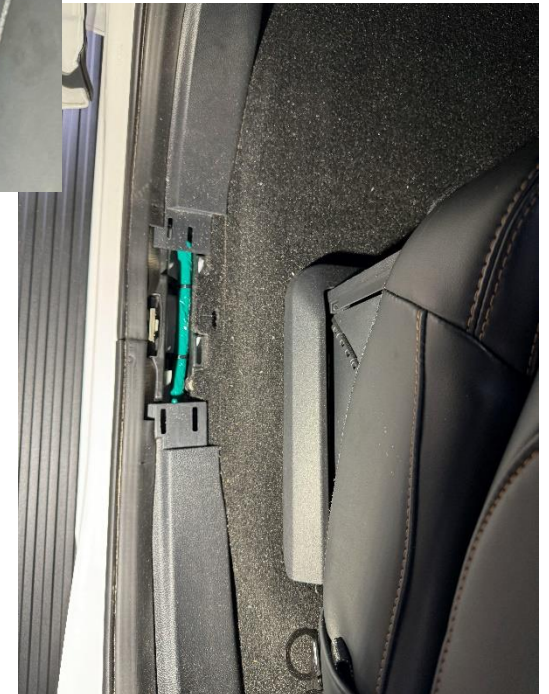
Step 2:

Unplug the 3 connectors on the factory amplifier. Remove the 4 bolts holding the amp to the plate. Also remove the 2 screws and 2 bolts holding the plate to the rear trim panel, the plate should then come free. Remove the plastic stud too.



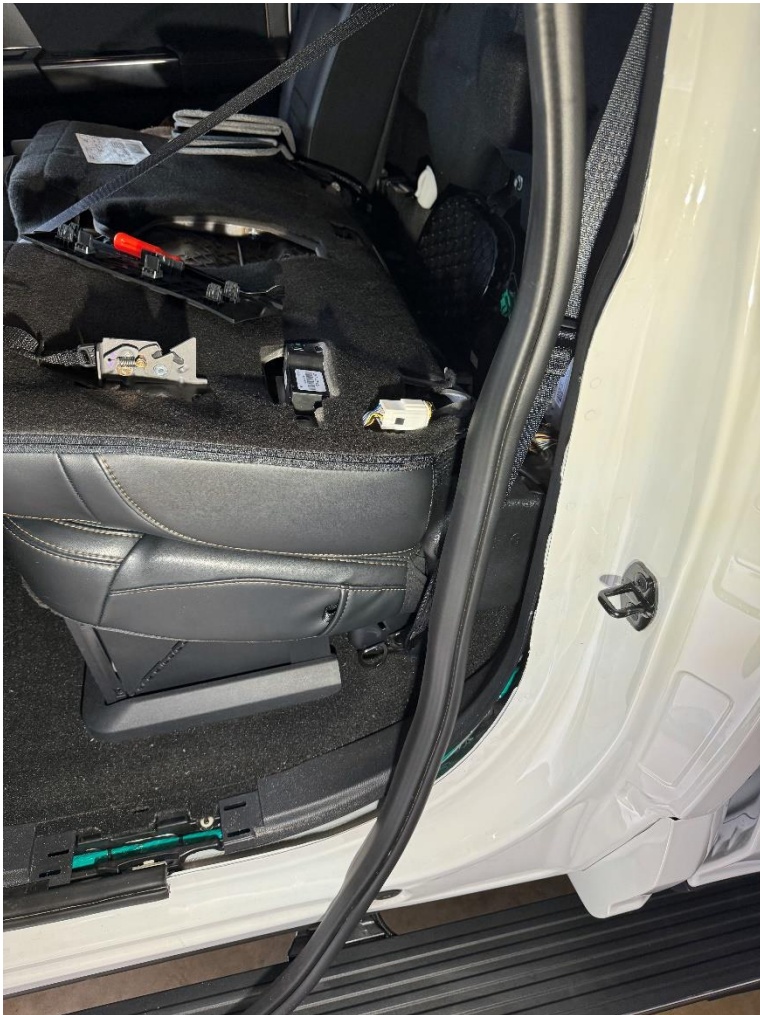
Step 3:

Remove the circled trim panel, it is just held on by clips. Pull upwards to release them.



Step 4:

Remove the weatherstrip along the door opening.



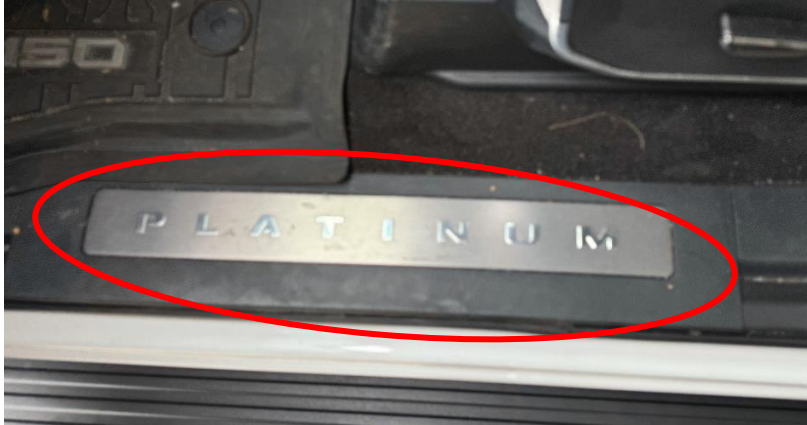
Step 5:

Release the clips on the rear D pillar trim next to the amp.



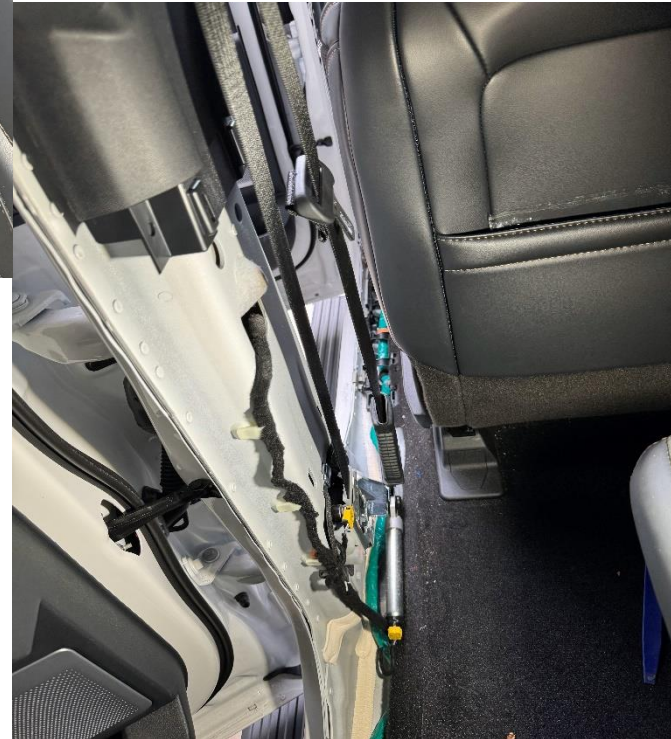
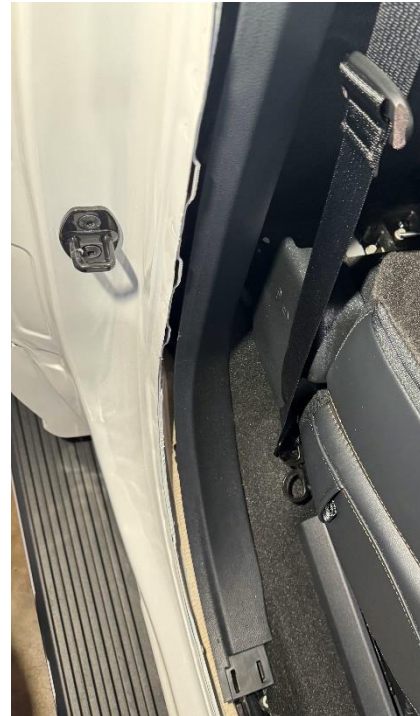
Step 6:

Remove the driver's sill trim panel, this is just held on by clips. Pry and pull upwards to release.



Step 7:

Remove the B pillar trim panel that is behind the seatbelt for the driver. Again, this is just held on by a few clips, pry to release them.



Step 8:

Remove the weatherstripping around the drivers door opening.

Step 9:

Remove left dash side cover panel



Step 10:

Remove the trim panel from the door well step.



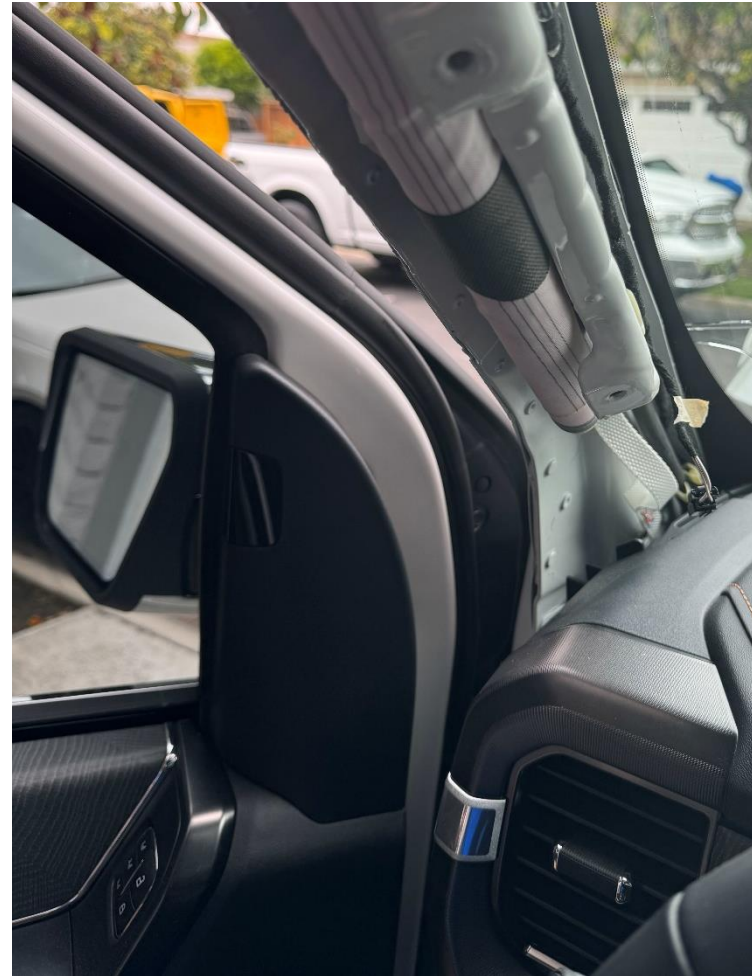
Step 11:

Remove the drivers A pillar handle cover, remove bolt.



Step 12:

Remove the A pillar cover, it should just pop off with minimal force



Step 13:

Run the **yellow** tweeter wire along the drivers sill, up to the tweeter and connect.

Step 14:

Now we need to run the new brown tweeter wire to the passenger A pillar tweeter. The process is very similar to the drivers side, the same trim panels need to be removed.

Route the cable from the amp along the trim on the rear wall



Step 15:

Remove the rear passenger weather stripping. Remove B pillar trim, route the cable along the rear passenger side sill. **Refer to step 7&3**



Step 16:

Remove the front passenger weather stripping. Remove kick panel trim. Remove A pillar trim.



Step 17:

Route the **Brown** tweeter cable along the sill up to the A pillar and connect to the tweeter.



Step 18:

Now it is time to run the power cable. We will need to get through the grommet in the firewall on the passenger side behind the battery. Take the top off the fuse box for more access to the area.

This is the grommet we are trying to get through. Locate it on the engine side of the firewall, cut the nipple off with a sharp knife/blade.



Step 19:

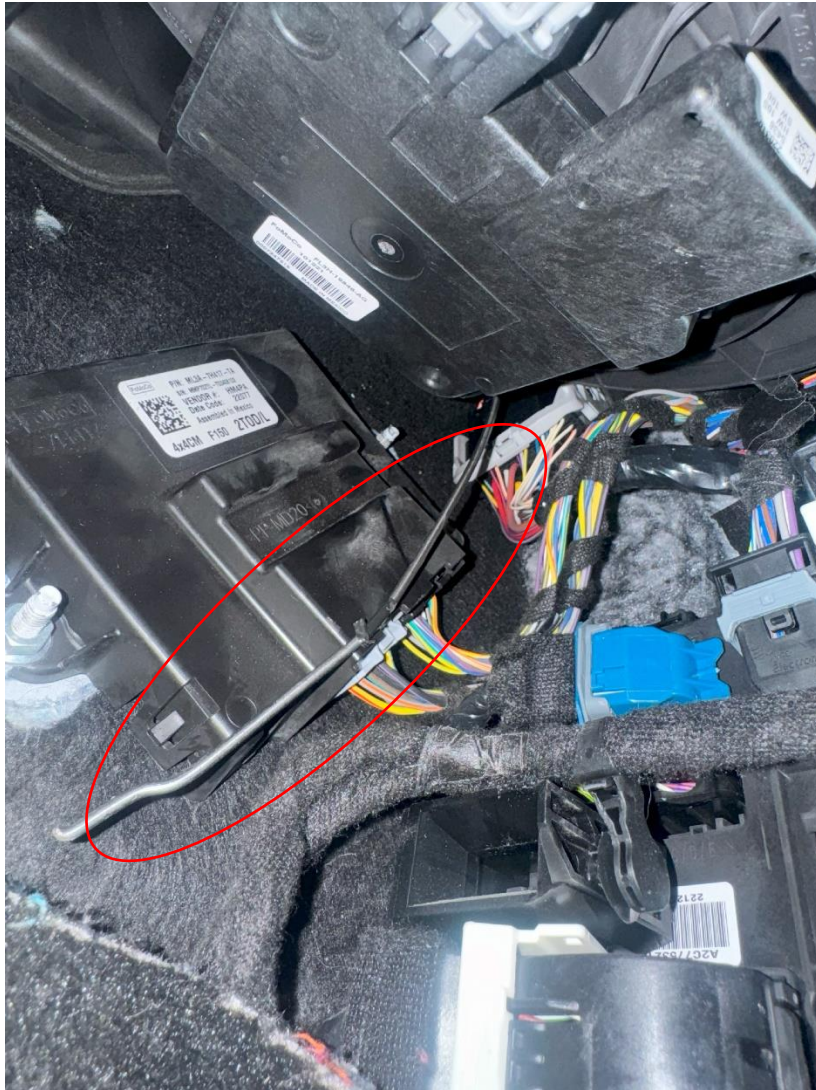
Push something long and thin through the hole in the grommet to provide a pull through for the power wire eg, a thick bit of solid wire or a coat hanger.

You will feel a little bit of resistance from the rubber on the other side of the grommet. Once through you'll need to point the pull through down towards the ground to be able to see it on the other side.



Step 20:

Locate the pull through on the other side in the passenger footwell. Tape the jack end of the power wire to your pull through and gently pull it through, you might want to use some lubricate on the engine side of the gromet to make this easier.



Step 21:

Secure the fuse holder with some zip ties. (Your fuse holder may look different)



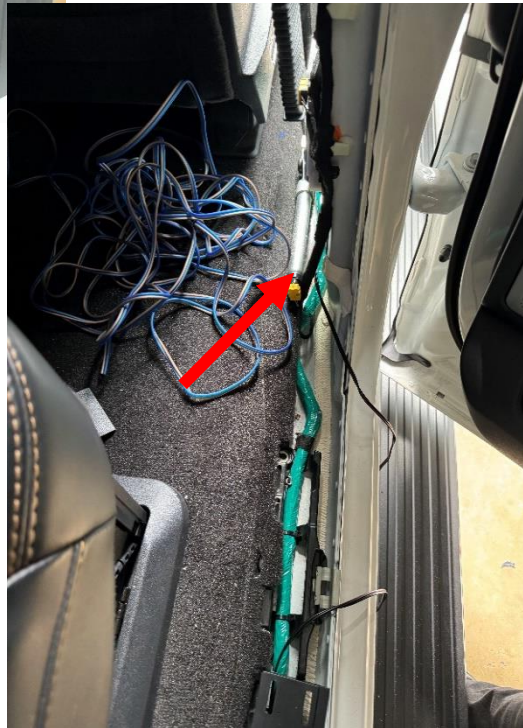
DO NOT CONNECT THE RING TERMINAL TO THE BATTERY YET!!!! WE WILL DO THIS AT THE VERY END.

Step 22:

Now route the power wire back to the amplifier along the sill next to the Tweeter cable.



Make sure your wires are behind the seatbelt



Step 23:

Run the power wire along the back wall behind the carpet.

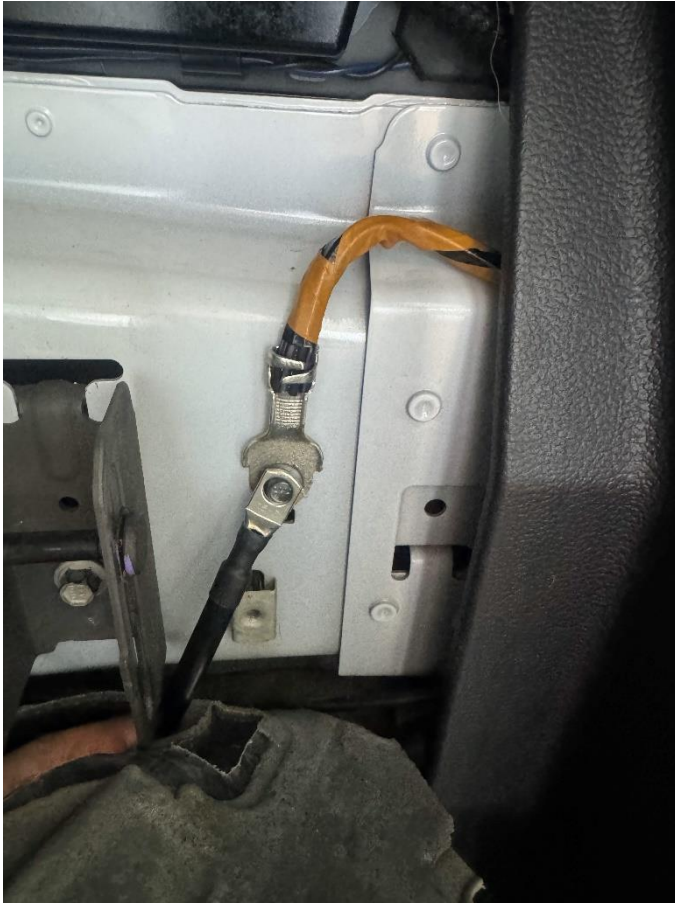


Step 24:

Now let's get the ground wire installed.

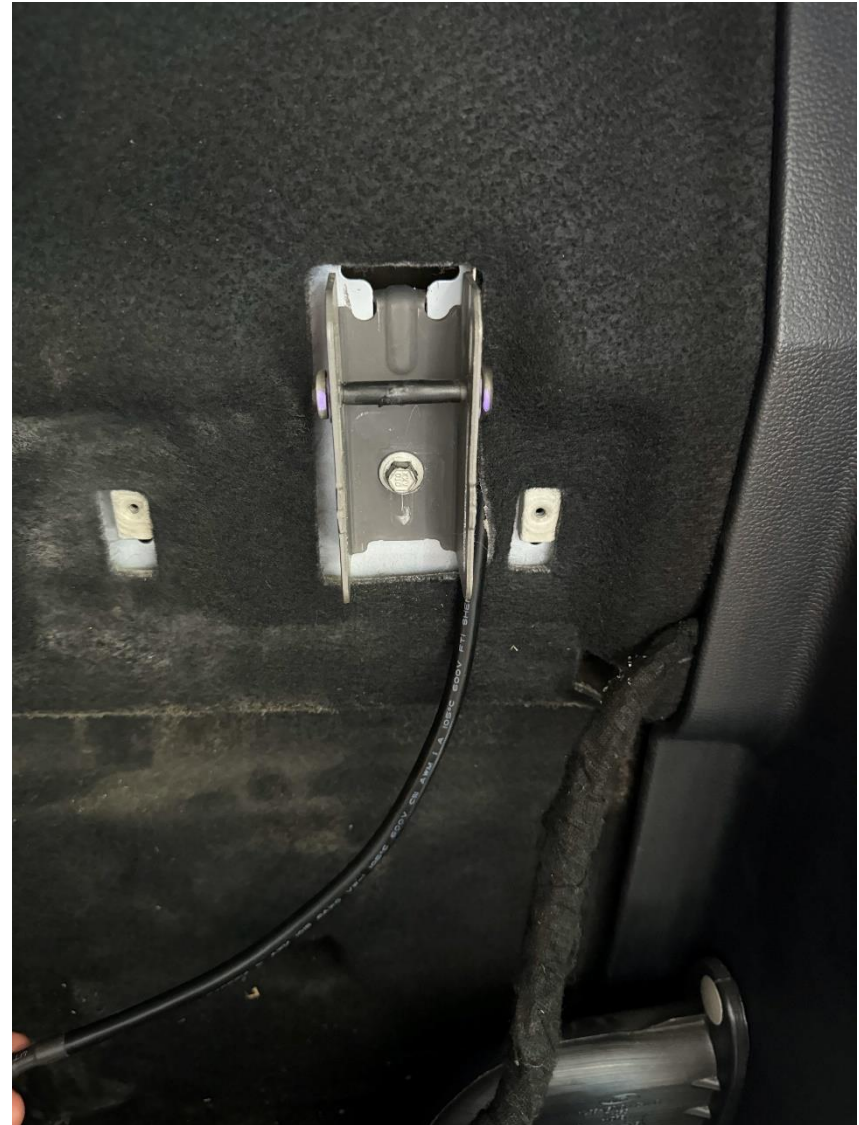
Remove the factory amplifier mounting bracket.

Peel back the rear trim on the back to expose the factory ground wire and bolt. Attach our ground lead here, route our ground lead back through the carpet and put the carpet back.



Step 25:

Route the cable through the carpet next to the seat clip. Then reinstall the factory amp mounting bracket.



Step 26:

Attach out amplifier to the mounting bracket with the 4 included bolts, then use the factory bolts to mount out bracket to the factory amp bracket.



Step 27:

Now connect everything.

- Power connector.
- Ground Jack connector.
- A2B Cable (Blue plug)
- CAN connection (flat 4 pin, back of amp)
- Main speaker harness (pink clip)
- Mini USB cable.

Step 28:

Connect ring terminal to battery and check for audio! If you have audio, you can now re-assemble.

